

MANOR ROAD MATTERS

12th December 2025



SCHOOL MENU ROTATION

W/C 15th December
will be Week 1.



CHRISTMAS PARTIES



A reminder of the dates for the children's Christmas parties:

Year 3 and 4: Monday 15th December

Year 5 and 6: Wednesday 17th December

Pre-School, Foundation Stage and Key Stage 1: Thursday 18th December

All the parties will take place in the afternoon but children can come to school in their party clothes/Christmas jumpers on the relevant day.

Please remember that your child still needs to bring a warm coat and wear sensible shoes for playtime and lunchtime.



ATTENDANCE

Individual class attendance for this week.

ASH = 97% YEAR 3 = 98%

ELM = 92% YEAR 4 = 94%

OAK = 94% YEAR 5 = 98%

YEW = 99% YEAR 6 = 96%

Well done to YEW Class for achieving 99%



NUMBERS FOCUS

Individual class activity on **Numbots** or **Times Table Rock Stars** compared to last week.

Class		% Active last 7 days
Reception	Numbots	31% - 3% on last week
Year 1	Numbots	43% - 22% on last week
Year 2	TTRS	50% - 16% on last week
Year 3	TTRS	51% - 14% on last week
Year 4	TTRS	56% no-one did 20 mins!
Year 5	TTRS	94% - 3% on last week
Year 6	TTRS	49% - 21% on last week

20 minutes a week- that's 4 minutes a day. Please can everyone try and achieve this target next week.

Mrs Foulds

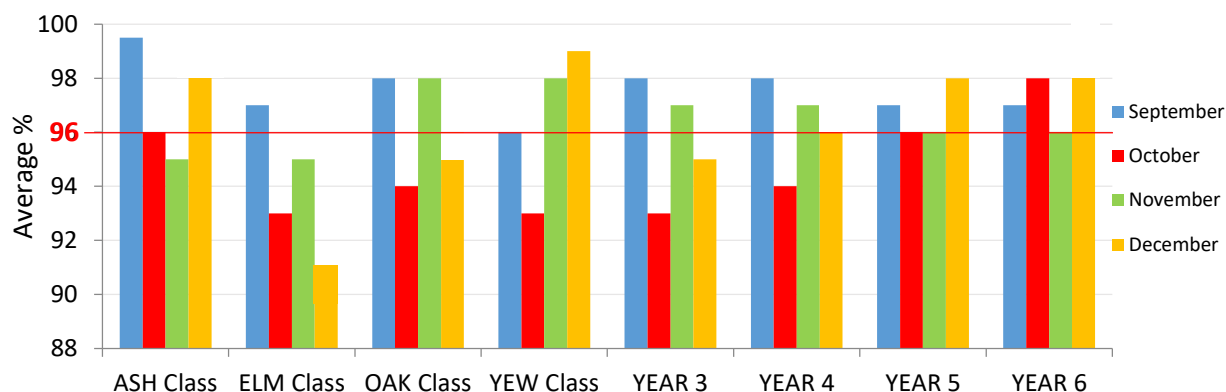
ONLINE SAFETY – TOP TIP THIS WEEK

Cyberbullying & Mental Health

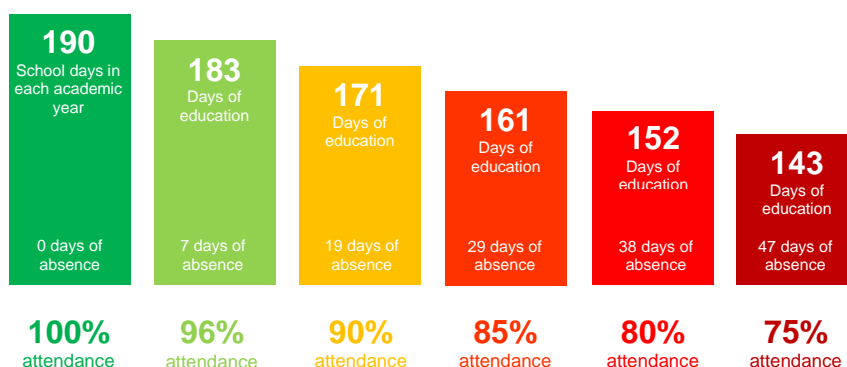
Recognize Signs of Cyberbullying: Look for signs like withdrawing from online activities, sadness, or anxiety.



AVERAGE MONTHLY ATTENDANCE FOR TERM ONE



Do You Know What Good Attendance Looks Like?



The attendance target at Manor Road this year is **96%**, but all pupils should strive to achieve **100%** attendance if they can.

If you take **2 weeks** holiday during term time your child's attendance can never be higher than **94.7%** even if they are in school every other day.

At Manor Road, doors open at 8.50am and the school day starts at 8.55am.

Children are expected to be in their classrooms by 8.55am.

Being **10 minutes late every day** throughout the academic year is the same as **missing two weeks of school.**

Government research shows a direct link between attendance and attainment and good attenders also make better progress socially, learn to work with others, and are better prepared for the transition to secondary school and, eventually, higher education, training and employment

Parents and carers have a legal duty to ensure that their children attend school regularly.